



UTE3545 Instructions

E450 C-Chassis thru 2004

E350 C-Chassis thru 2015

Rear Trac Bar

Each installation may vary due to chassis manufacturing options and variations in design. The rod assembly may be installed in several different combinations, such as either front or rear of the supplied brackets as well as using different bracket holes. The important thing is to maintain clearance between your UltraTrac and any chassis component (moving and stationary) such as exhaust, vehicle frame, differential, or any other item which might interfere with the operation of this product. Pictures and diagrams may not represent the best installation for every application.

Bolt Torque Specifications

Torque in Foot-Pounds for Inch Bolts

Bolt Size	Grade 5	Grade 8
1/4"	10	14
5/16"	19	29
3/8"	33	47
7/16"	54	78
1/2"	78	119
5/8"	154	230
3/4"	257	380



Bolt Torque Specifications

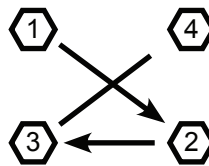
Torque in Foot-Pounds for Metric Bolts

Bolt Size	Grade 8.8	Grade 10.9
6MM	6	8
8MM	16	22
10MM	31	40
12MM	54	70
14MM	89	117
16MM	161	230
18MM	222	318

Bolt Torque Specifications

Torque in Foot-Pounds for Grade 5 U-Bolts

Bolt Size	Fine	Course
3/8"	21	18
7/16"	33	29
1/2"	52	45
5/8"	107	91
3/4"	190	165
7/8"	304	270



*Always tighten and torque u-bolts in a cross pattern sequence.

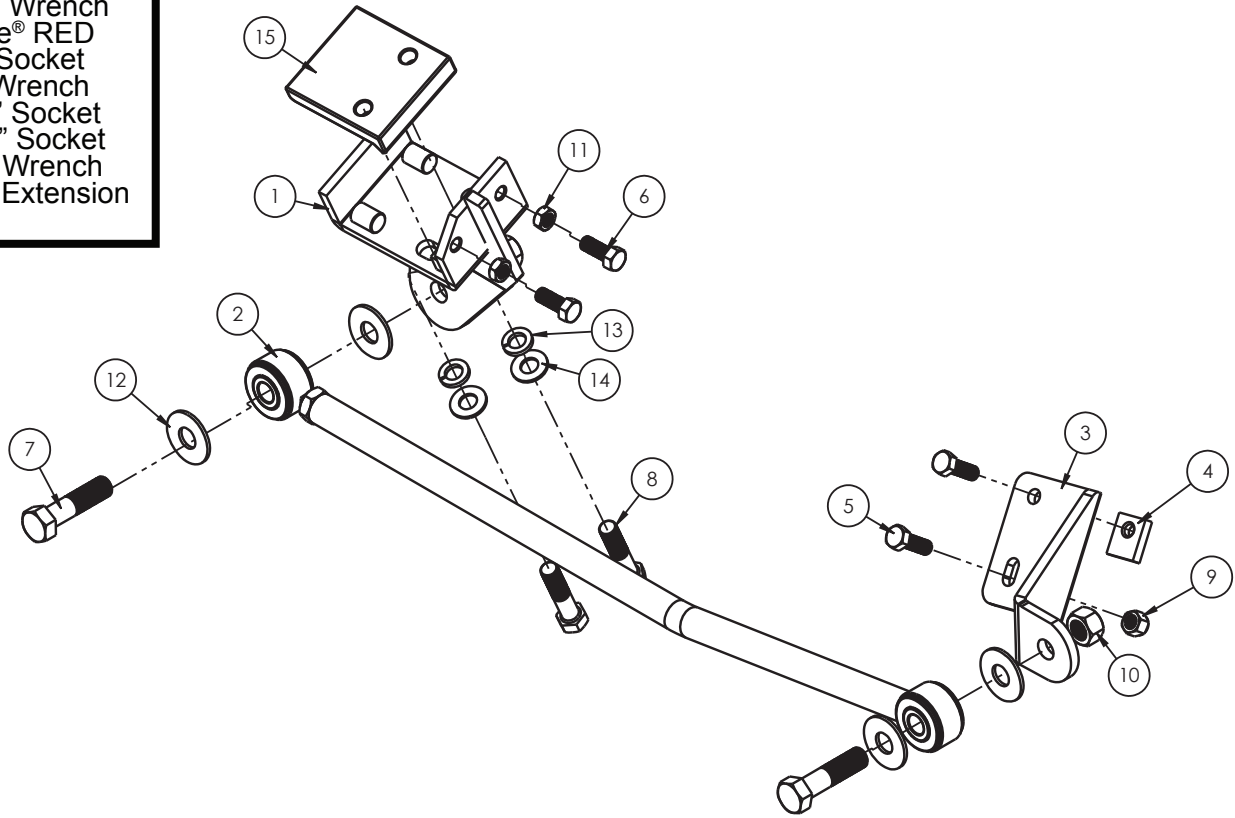
NOTICE

- Only a qualified mechanic using normal automotive tools and following all safety standards should perform the installation of this product.
- If the vehicle is equipped with air bags be sure that nothing interferes with the deployment of them.
- Be sure to use Loctite® Red on all bolts before tightening. Tighten all bolts according to the torque charts provided or to the manufacturer's torque specifications on OEM parts. If no manufacturer specifications can be found then use the torque charts provided.
- Dealer or installer be certain the user receives these instruction sheets.

E450 C-Chassis thru 2004
E350 C-Chassis thru 2015
Rear Trac Bar

Tools Required

- Torque Wrench
- Loctite® RED
- 3/4" Socket
- 3/4" Wrench
- 15/16" Socket
- 1-1/16" Socket
- 1-1/8" Wrench
- 6" Drive Extension



Item No.	Part No.	Description	Qty.
1	61-6439	UTE3545 Frame Bracket	1
2	62-3634	UTE3545 Rod Assembly	1
3	101-7145	UTE3545 Axle Bracket	1
4	102-7113	UTE3545 Nut Plate	1
5	201-0051	1/2"-13 x 1-1/2" Hex Head Bolt, Grade 5, ZP	2
6	201-0308	1/2"-20 x 1-1/4" Hex Head Bolt, Grade 5, ZP	2
7	201-0632	3/4"-16 x 3" Hex Head Bolt, Grade 5, ZP	2
8	201-0913	5/8"-18 x 2-3/4" Hex Head Bolt, Grade 5, ZP	2
9	202-0094	1/2"-13 Hex Nylon Insert Lock Nut, ZP	1
10	202-0168	3/4"-16 Stover Lock Nut, ZP	2
11	202-0184	1/2"-20 Jam Hex Nut, ZP	2
12	203-0007	3/4" Flat Washer, ZP	4
13	203-0013	5/8" Lock Washer, ZP	2
14	203-0106	5/8" SAE flat Washer, ZP	2
15	229-0734	Frame Bracket Nut Plate	1
16	190-0155 (not shown)	10-1/2" Loom	1
17	290-0275 (not shown)	8" Cable Tie	2



E450 C-Chassis thru 2004
E350 C-Chassis thru 2015
Rear Trac Bar

1. Position the vehicle on a level surface with the front wheels straight ahead and sitting at normal ride height. Set the brake and chock all the wheels.
2. If the vehicle has a sway bar equipped, install the sway bar spacers supplied in the kit prior to installing the axle bracket. On the passenger side, remove the shock from the lower mount. Install the axle bracket onto the shock mount with the supplied 1/2" hardware and fully tighten. Reinstall the shock absorber to the mount with the factory hardware.
3. Position the frame bracket onto the driver side frame rail and loosely secure it with the nut plate frame bracket and the 5/8"-18 x 2" bolts with 5/8" lock and flat washers. Loosely install the two (2) 1/2"-20 x 1-1/4" bolts with the 1/2"-20 jam nuts into the frame bracket. The bracket needs to be loose enough on the frame rail to move back & fourth to line up with the axle bracket.
4. Install the rod assembly onto the axle bracket with one (1) 3/4"-16 x 3" bolt, two (2) 3/4" flat washers and a 3/4" lock nut. Be sure the flat washers are on either side of the urethane bushing. Position the frame bracket so it is straight with the axle bracket and rod assembly. Adjust the length of the rod assembly until you are able to pass a bolt thru both the rod assembly and frame bracket. Install a 3/4" bolt, two (2) flat washers and a 3/4" lock nut into the rod assembly and frame bracket. Leave all bolts finger tight for now.
5. Once the frame bracket is straight with the rod assembly and axle bracket, alternately tighten down the 5/8" bolts on the frame bracket and torque to specifications. Then torque the 1/2"-20 x 1-1/4" bolts to the frame and tighten the jam nuts.
6. Torque the 3/4" bolts in the rod assembly to specifications. Inspect for any wiring or hoses that may rub against the brackets and secure in a safe position with the loom and/or cable ties provided.

Note:

The upper bolt/nut plate may need to be reversed for shock absorber clearance.



Brazel's RV Performance
3912 Harrison Ave.
Centralia, Wa 98531
Phone: (360) 736-9494 • Fax: (360) 736-9497
www.brazelsrv.com