

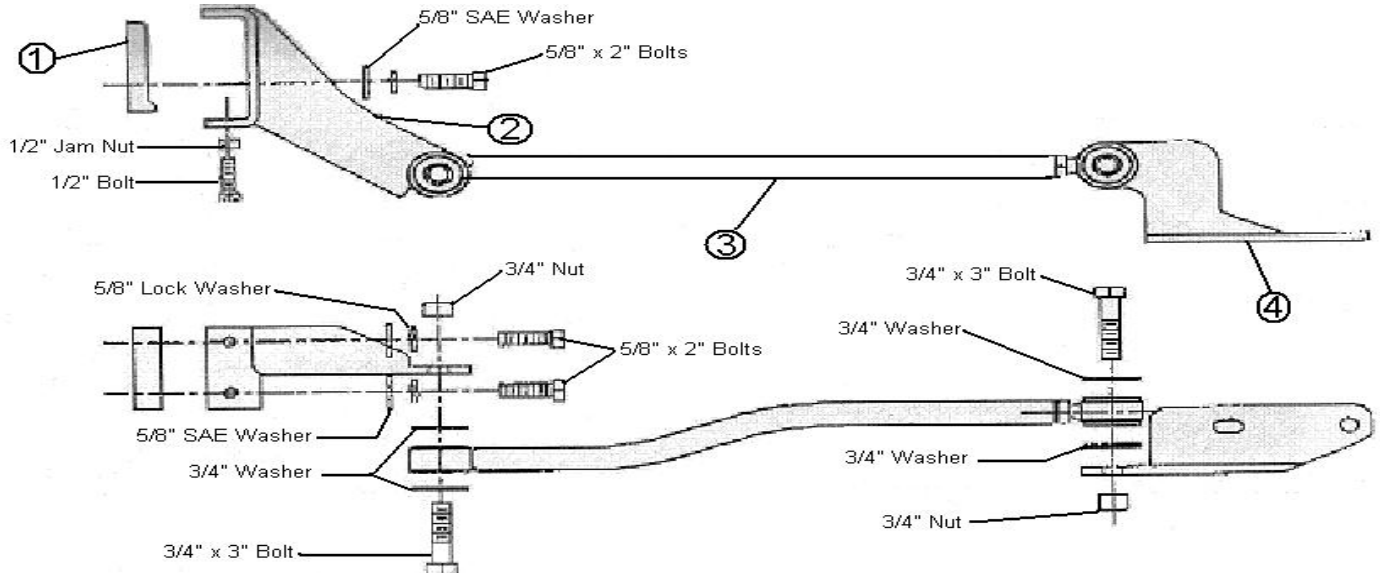
UltraTrac

Steering and Handling Products

Installation Instructions UTW22F

Fits the Front W16, W18, W20, W22, W24 Workhorse Chassis

| Ref# | Part# | Description | Tool Required: | |
|------|--------|---------------|---------------------|---------------------|
| #1 | 22-054 | Nut Plate | 1 1/8" Socket | 1/2" Drive Ratchet |
| #2 | 22-144 | Frame Bracket | 1 1/8" Combo Wrench | 1/2" x 6" Extension |
| #3 | 22-151 | Rod Assembly | 15/16" Socket | Torque Wrench |
| #4 | 22-145 | Axle Bracket | 3/4" Combo Wrench | |
| | 22-150 | Bolt Kit | 3/4" Socket | |



1. Move the coach to a level, flat surface. Drive the coach onto approximately 4" blocks. Set the brake and chock wheels. Block off adequate space at the front of the coach to work.
2. Begin by removing the nuts on the front u-bolt on the driver's side of the front axle. Place the axle bracket (Part #22-145) on the u-bolt as in figure 1, and replace and torque the nuts that were previously removed to 140—150 ft.lbs.
3. Place the frame bracket (part #22-144) on the outside of the passenger side frame rail in front of the axle, and loosely secure it with the nut plate (part #22-054) with the supplied 5/8" x 2" bolts, see figure 2. The bracket and nut plate must be able to move front to back on the frame. Install the two 1/2" x 1" bolts with jam nuts finger tight for now.
4. With the coach at normal ride height, install the adjustable end of the rod assembly (part #22-145). Use one of the supplied 3/4" x 3" bolts, two washers, and nut and assembly loosely. Adjust the length of the rod while adjusting the placement of the frame bracket and nut plate until you are able to assemble the supplied 3/4" x 3" bolt, two washers and nut.
5. Tighten the 3/4" bolt and nut on the axle bracket to spec (175-200 ft lbs). Tighten 3/4" bolt and nut on the frame bracket to spec (175-200 ft lbs). Alternate tightening the 5/8" bolts (100-125 ft lbs) and 1/2" bolts (80-100 ft lbs) on the frame bracket. The nut plate must be pressed against the frame using the 1/2" bolts while at the same time, the 5/8" bolts sandwich the frame bracket and the nut plate. Lastly, tighten the jam nut on the rod assembly.

Figure 1

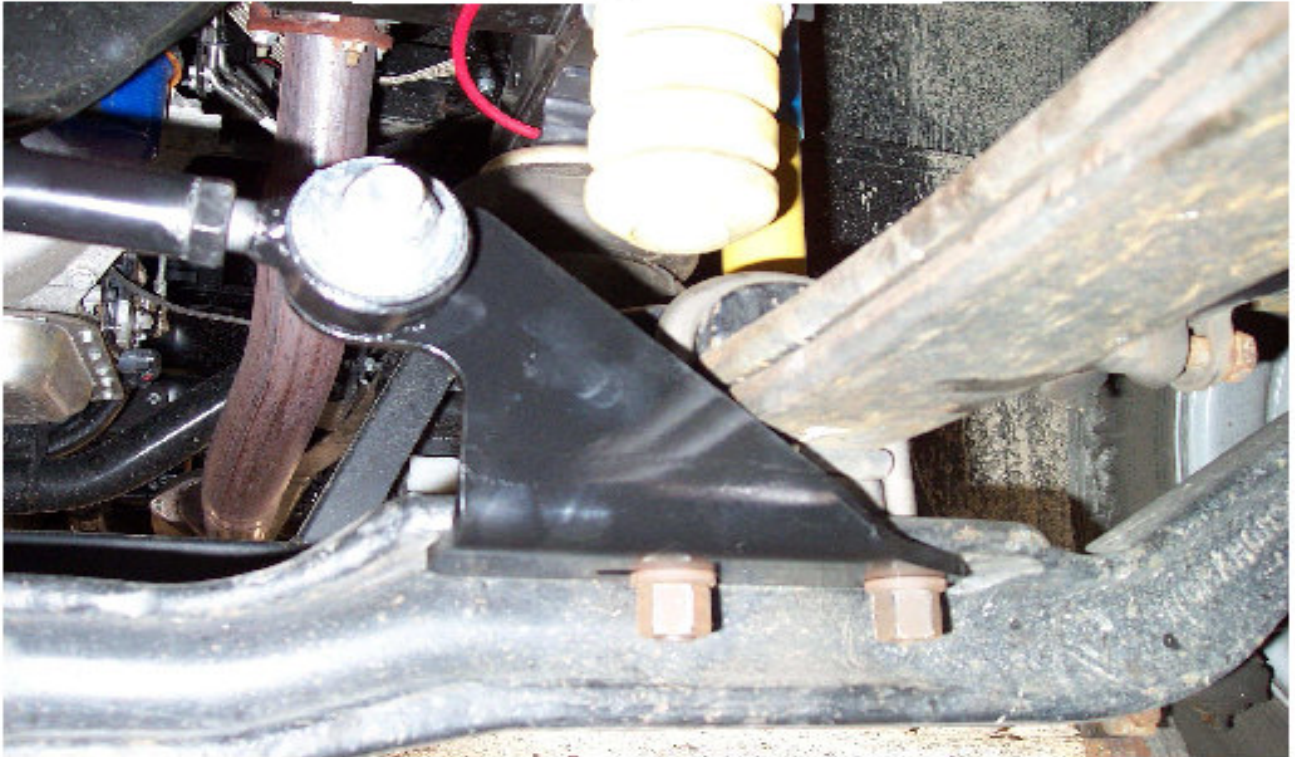
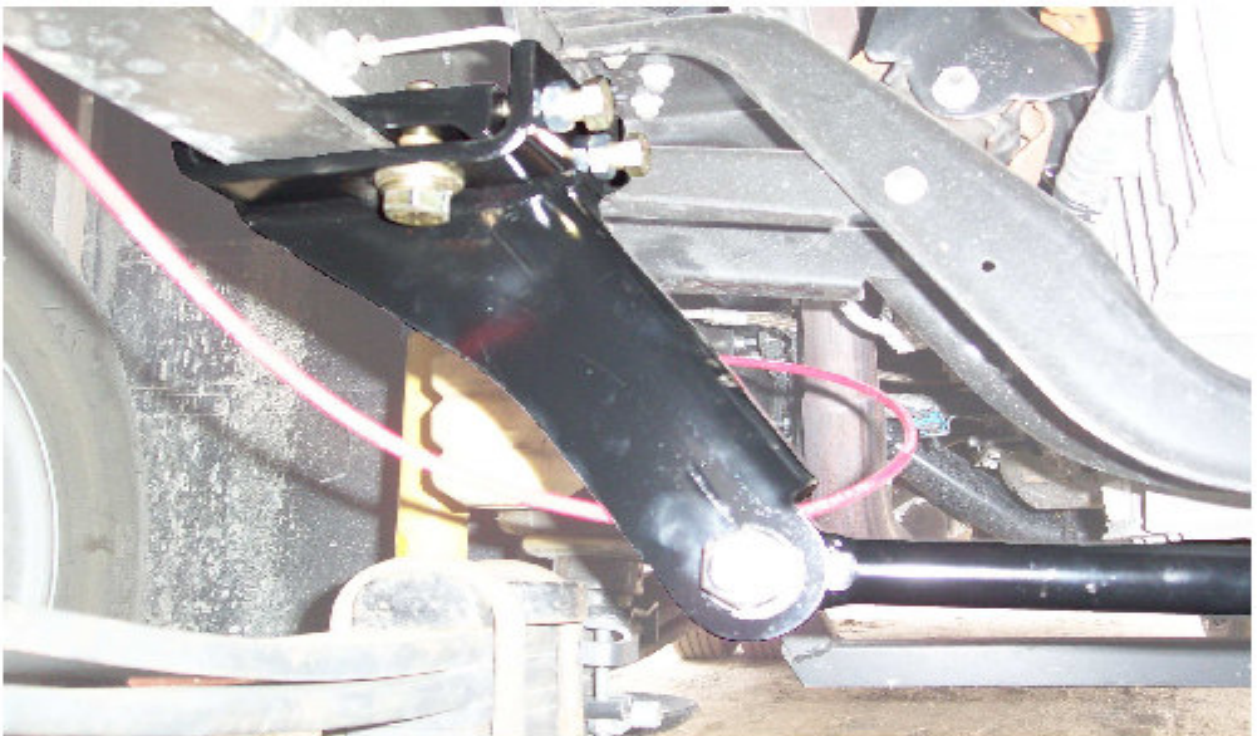


Figure 2



If you have any questions, call Ultra-Distributing at
877-786-1576 or 541-441-0377
www.ultradistributing.com email: mike@ultradistributing.com